

# Chalet Sapphire

Morzine | Sleeps 12 (+4 in Little Gem)



Chalet Sapphire



# CONTENTS

---

<b>The Story</b> A quest to build the ultimate luxury ski chalet	5
<b>Virtual Tour</b> A new concept in luxury property development	11
<b>Fact Sheet</b> Chalet Sapphire at a glance	30
<b>Floor Plans</b> Luxurious accommodation for up to 16 guests	33
<b>Your Stay</b> The experience	53
<b>Bamford Spa</b> Your private wellness suite	56
<b>The Resort</b> An insider's guide to Morzine	58





# THE STORY

---



“I wanted guests to have it all. It became a personal ambition to build a ski chalet that truly ticked all the boxes.”

Having travelled the world, staying in some of the finest luxury ski chalets, the owner of Chalet Sapphire noticed one thing — every single one of them came with a compromise. And so came about the vision for Chalet Sapphire. A quest to build the ultimate luxury ski chalet. We talked to the owner to find out the real story behind this incredible property.

Chalet Sapphire is a result of being lucky enough for many years to stay in some of the best catered ski chalets around Europe with my friends and family. We enjoyed every trip but I couldn't help but notice that on every holiday and in every chalet, there was always a compromise involved. Each chalet experience was unique with its own merits, but all came with their own challenges, whether that be in terms of the location, the way it was run day-to-day, the internal and external layout, or the facilities the chalet was able to offer.

It became apparent that nearly all these luxury chalets were lovingly designed and built for their owner's holidays or even to be their main home, then converted for the luxury travel industry afterwards. They were doing the best they could with what

they already had. But repurposing a luxury chalet comes with many compromises, in areas not normally affecting a private home.

For example the lack of a truly professional kitchen, or laundry facilities or having separate sitting and entertainment areas. What was needed was a luxury residence, built with the mind-set of a 5 star hotel, that offered you your own private and cosy hideaway from it all. Guests were experiencing only small glimpses of that. I wanted guests to have it all. It became a personal ambition to build a ski chalet that truly ticked all the boxes; and so it started and I spent over 5 years looking for the perfect location.

I have to be honest, Morzine was not my first choice. Meribel, Val d'Isere and a few resorts in Switzerland



were always the first places I thought of when on the hunt for a luxury ski chalet. But when I started to really investigate and ask myself “what do individuals and families really want from their ski holiday and chalet experience?”, then actually the choice of location is not nearly as clear cut.

Morzine has one of the largest ski areas available in the world. It is only just over an hour away from the well-connected Geneva International Airport. The town itself is full of normal shops as well as smart boutiques, with a vast array of good restaurants and bars nearly all of which offer far better value for money than in other resorts which I have stayed. The more I came here, the more I was surprised — very pleasantly — to find it also has the most enviable snow record. It really does have a snow-making microclimate as a result of its location bang in between Mont Blanc and Lake Geneva. In the US skiers rave about the powder snow of Lake Tahoe; it's the same here, but less people know about it!

Not only that, but the pistes here really do suit every type of skier. There are beautiful tree-lined runs down to Les Gets, as well as high-altitude bowls

above Avoriaz and plenty of off-piste for those so inclined. We've had fantastic skiing here on every visit, whatever conditions may bring, at all times of the season.

My mind was finally made up when I was offered a piece of land. I'd looked at lots of plots but that word, compromise, applied to most. They either had great views but were hard to access, or central but small and closed in. When I first walked onto the site I knew it was the perfect location. It's only a quick flat walk into town but it also enjoys the most fabulous view over the village and of the mountains beyond. I knew then that we could do it all here, and so it really started.







“This isn’t just another high-end ski chalet. It’s a new concept in luxury property development.

**All the best aspects of a luxurious five-star hotel combined with the intimacy of a private residence.** Guests are going to love staying here.”

## VIRTUAL TOUR

---

The location is one of a kind. Moments from the centre of Morzine the gated grounds offer exceptional access to the ski area as well as privacy and stunning views. The main property approaches 835m<sup>2</sup> of floor space and sleeps up to 12 people in six spacious double bedrooms. Just next door is Chalet Little Gem, an ace in the sleeve of Chalet Sapphire. Little Gem offers two additional double bedrooms as well as its own sumptuous open plan living space. In total the property offers luxurious accommodation for up to 16 guests, but the really special part of the property is it’s facilities. Everything has been considered...



# Spa & Wellness

The exceptional spa and wellness areas are extremely spacious for a private residence – in fact, they are a worthy destination in their own right. Of course there's a pool – indoor, with massage and counter-current jets as well as a view of the mountains. Then there's the hammam, ice chamber and dedicated Bamford Spa where guests can choose from a range of massage and beauty treatments by a Bamford-trained therapist. But it doesn't end there. Outside, guests can relax in the large hot tub, sunk into the deck and the barrel sauna with panoramic views over the resort. Scheduling R&R time is certainly important when staying here. Wellness at Sapphire isn't just about relaxation, it is very much seen as a holistic vision which perfectly echoes our modern active lifestyles. Alongside the fantastic spa facilities there is a well-equipped gym, and forest trails starting at the foot of the garden.









## At Dusk

As day turns to dusk your attention will turn to the chalet's social spaces. The bar, complete with pool table, opens directly onto the large terrace – an incredible spot to watch the sun set. A sunken fire pit keeps the chill off as you watch night fall. Behind the bar our professional staff prepare speciality cocktails as well as serving drinks from our Four Bottles Bar menu – there are fine wines, craft beers and a range of speciality gins to sample.





# Mountain Living

Winding up the oval spiral staircase will lead you to the main living area where a stunning fireplace will warm and comfort you even on the coldest of winter days. The exposed reclaimed wood brings all the warmth and character of a traditional alpine lodge, but here it is beautifully crafted into a modern, luxury, residence.









# Your Private Restaurant

Adjacent to the main living area is the dining room, set around a large handmade Balinese teak table. An inset balcony frames yet another stunning view towards the Pointe de Nyon. There's a professional closed kitchen for the 'serious' work, and an open show kitchen for service and chef demonstrations. From here your chef will serve stunning contemporary cuisine. All our menus can be personalised to individual requirements, but we are also proud to showcase our own signature dining concepts which are unique to The Boutique Chalet Company. A stay wouldn't be complete without sampling Kaiseki – our fine dining Japanese menu – and perhaps also one of our Taste menus on an evening where you want to slip away early to the cinema room, a haven for movie lovers and younger guests alike.





# Sleep

When it's time to turn in for the night the bedrooms here will not disappoint. The two stunning Master Suites have incredible ceiling heights to show off the exceptional mountain views. Each room has its own USP; some have dressing rooms or freestanding baths and others have walk-in drench showers. There are no short straws here though. Every room has a super-king bed that can split to twin beds as required, so whatever the makeup of your group, you'll be covered.









# Little Gem

For larger groups there is one more ace in Sapphire's pack, Chalet Little Gem is located just adjacent to the main property and offers a further two en suite bedrooms and a generous open plan living space of its own. At 135m<sup>2</sup> this isn't simply an 'annexe'; it's a chalet in its own right and allows up to 16 guests to enjoy in uncompromising luxury this gem of the Alps.





# Fact Sheet

SURFACE AREA	835m <sup>2</sup> in Chalet Sapphire and 135m <sup>2</sup> in Little Gem
GROUNDS	Grounds of 2100m <sup>2</sup> accessed by a private gated driveway. Covered parking for several vehicles. Extensive terraces wrapping around the property with separate spa, dining, seating and BBQ areas, all enjoying panoramic mountain views
BEDROOMS	6 in Chalet Sapphire and 2 in Little Gem — all of which can be configured as double or twin beds. Every room features a personal safe and a GHD pack
NORMAL CAPACITY	12 to 16 guests
SPA & WELLNESS	Indoor pool with massage jets 10 person hot tub Barrel sauna with glazed viewing window over the resort Hamman with aromatherapy and hydro shower Spa ice chamber with chromotherapy Treatment room with separate changing and shower facilities Hydrotherapy 'four seasons' shower
GYM	Air-conditioned gymnasium with a range of cardio, strength and flexibility training equipment
BAR	Bar and lounge with pool table and direct access to the seating area and firepit on the large terrace. A separate wine cellar features fine wines from around the world
CINEMA/TV ROOM	Large 4k screen with surround sound and the latest games consoles
AUDIO-VISUAL	Sonos music streaming and professional grade WiFi throughout the property and grounds
EXTRAS	Large boot room with live piste webcam and weather display Childrens toys, sledges, games and books
KITCHEN	Open kitchen for service with separate closed prep kitchen
TIME TO SKIING	5 mins to Pleney (Morzine-Les Gets) or Prodains (Avoriaz)
TIME TO RESORT CENTRE	5 mins level walk
NEAREST AIRPORT	Geneva
TRANSFER TIME	1hr 20mins







# FLOOR PLANS

---



# Floor -4

- Treatment relaxation area and dedicated treatment room for Bamford massage and beauty treatments with dedicated changing area with 'four seasons' shower
- Gymnasium with cardio and strength conditioning equipment and direct access to terrace
- Cinema with large 4k display, digital surround sound and games consoles
- Bedroom 1 – Super king/twin beds, en suite shower room and direct access to the principle terrace





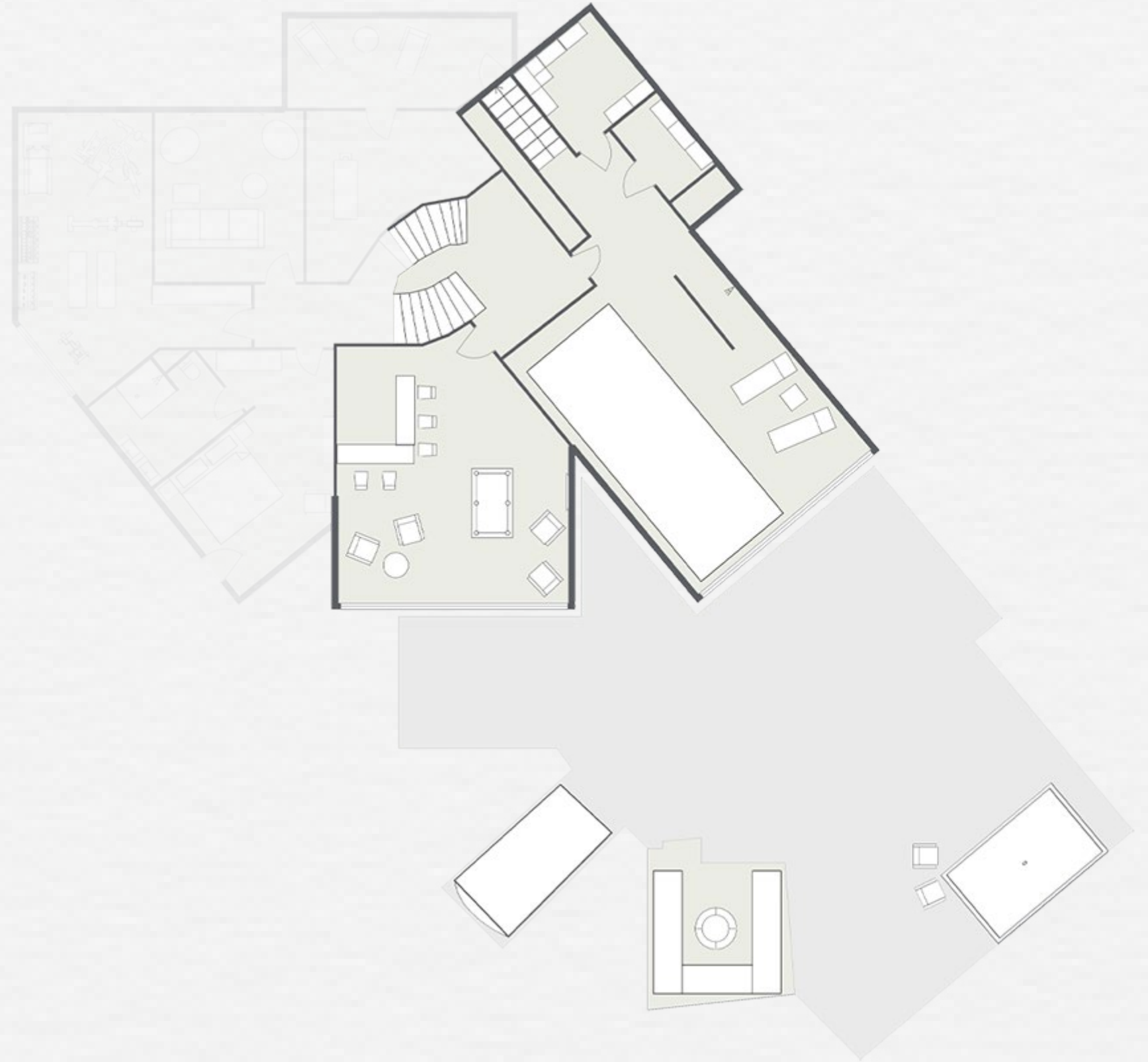
# Floor -3

## *Grounds & Exterior*

- Enormous wrap around south facing terrace with various seating, dining and spa areas. Gorgeous panoramic views across the village centre and towards the pistes at Pleney and Nyon

## *Interior*

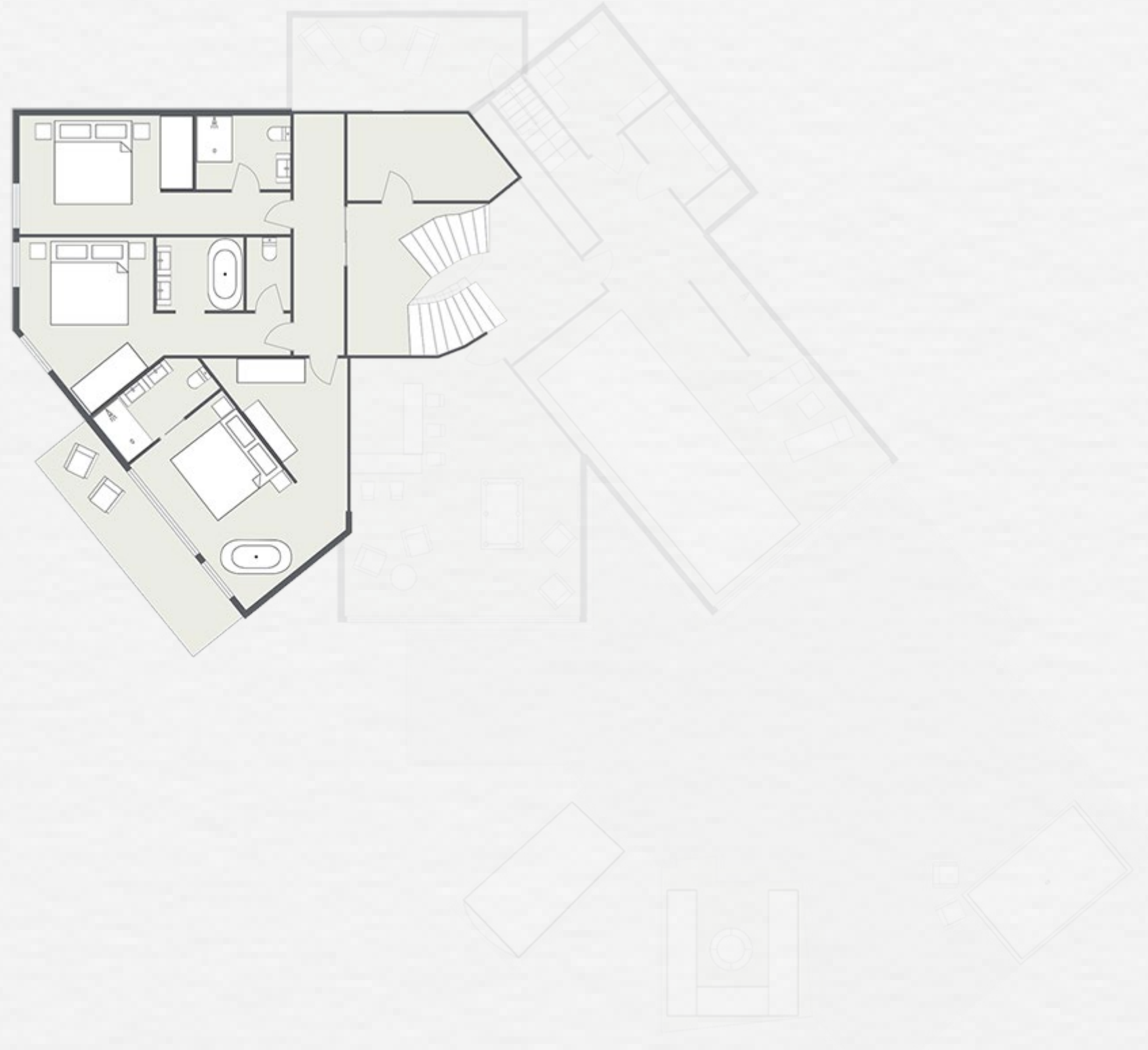
- Bar and lounge with pool table, TV with surround sound and direct terrace access
- Extensive spa with indoor swimming pool, ice chamber with chromotherapy, hamman with aromatherapy and hydrotherapy shower
- Direct access to large terrace with hot tub and barrel sauna with glazing to panoramic views across the resort





# Floor -2

- Extensive wine cellar with a global wine selection
- Bedroom 2 – Master Suite – Super king/twin beds, en suite shower room with freestanding bath in room. Separate wardrobe and dressing area and balcony with views towards Mont Chery
- Bedroom 3 – Super king/twin beds, en suite bathroom with overhead rain shower and forest views
- Bedroom 4 – Super king/twin beds, en suite bathroom with overhead rain shower and forest views
- Laundry and storage facilities





# Floor -1

- Principle living room with feature fireplace and inset balcony with panoramic views across the resort
- Dining room with handcrafted Balinese dining table to seat 16 and additional breakfast bar seating. Inset balcony with panoramic views across the resort
- Demonstration and service kitchen with Teppanyaki plate for final plating before service
- Professional closed kitchen for food preparation including direct staff and delivery access for discretion of service





# Ground Floor

## *Grounds & Exterior*

- Secure gated access to Chalet Sapphire and Little Gem\*
- Separate staff entrances for deliveries and discretion of service
- Secure covered parking for multiple vehicles\*

## *Interior*

- Double-height entrance hallway to principle chalet
- Separate boot room entrance – spacious boot room including heated boot/glove warmers and piste webcam with live weather forecast

\* facilities scheduled for completion for 2019/20 season





# First Floor

- Bedroom 5 – Master Suite – Super king/twin beds, en suite shower room with freestanding bath in room. Impressive ceiling apex with expansive views towards Avoriaz from a juliet balcony
- Bedroom 6 – Master Suite – Super king/twin beds, en suite bathroom with separate shower and separate dressing room. Sitting area with panoramic views over the village centre and mountains beyond





# Little Gem Ground Floor

## *Grounds & Exterior*

- Secure gated access to Chalet Sapphire and Little Gem\*
- Separate staff entrances for deliveries and discretion of service
- Secure covered parking for multiple vehicles\*

## *Interior*

- Entrance hall and W/C leading to accommodation levels

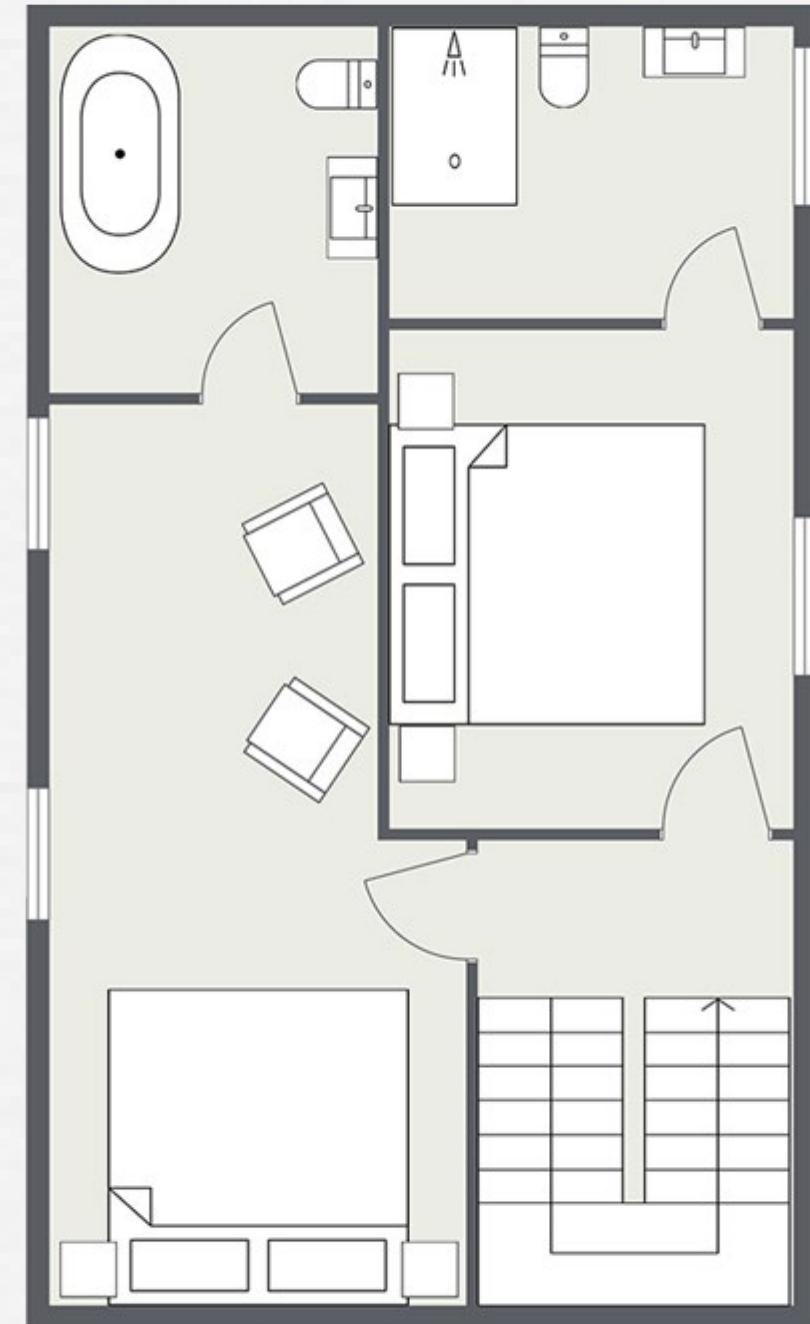
\* facilities scheduled for completion for 2019/20 season





# Little Gem First Floor

- Bedroom 1 – King/twin beds, en suite bathroom with shower over
- Bedroom 2 – King/twin beds, en suite shower room and south facing balcony with mountain views





# Little Gem Second Floor

- Open plan living area and kitchen, with large south facing balcony with stunning views over the principle chalet towards the village and mountains beyond







YOUR STAY

---



# The Experience

As part of our Exclusive Collection, Chalet Sapphire sits amongst some of the finest properties found anywhere in the Alps. To complement the exceptional quality of accommodation you can expect to be looked after by our most experienced professionals who have previously worked in private households, exclusive hotels and Michelin-starred restaurants.

Champagne corks pop on your arrival, with a champagne welcome reception and an introduction to your chalet team who include a Chalet Manager, Assistant Manager, Professional Chef, Driver and Housekeeping Team. Following a tour of the fabulous chalet facilities there will be plenty of time to relax and settle into your room. Sumptuous beds, Egyptian cotton linen and indulgent organic and botanical bathroom products from Bamford are our standard.

When you emerge, rejuvenated, from your room and head for the dining table, our luxurious catered package is one of the most innovative in the industry. Guests can enjoy our signature dining concepts such as Kaiseki – our Japanese multi-course dining experience – and our critically acclaimed Breakfast Club – the finest way to start any day. Drinks are available from our Four Bottles Bar featuring fine wines, craft beers, select gins and spirits and our own cocktail menu.

Each day your driver is available from dawn to dusk to whisk you to and from the ski slopes or the village centre, so there is never a need to walk in ski boots. Our après ski chauffeur service means your comfortable shoes can even be brought to the bottom of the slopes for you!

Chalet Sapphire is available on a fully-catered basis, for exclusive use of the whole property.





A woman with dark hair pulled back is lying on her stomach on a massage table. Her eyes are closed, and she has a serene expression. A massage therapist's hands are visible, gently massaging her back. The background is softly blurred, showing a bright, clean spa environment.

# bamford

Step inside the wellness suite at Chalet Sapphire and you will discover your very own private Bamford Spa. Our partnership with Bamford is one born out of shared values and beliefs. It's a collaboration that we are very proud of.

Bamford is about the simple pleasure of quality. Since 2006, this philosophy has created the purest body care and spa range using only organic and botanical ingredients. Bamford are committed to making truly natural products using the best artisans from around the world. Bamford is authentic luxury – serene, timeless and pure.

Bamford's organic and botanical facials and body massage treatments are individually crafted and deliver a truly relaxing experience in order to unwind after a day in the mountains.



# Welcome To Morzine



Morzine. The heart of the Portes du Soleil. A beautiful village where skiing has been part of winter life since the lifts first opened in 1934. Whilst traditionally it may not have been a destination for those seeking the finest the luxury ski world can offer, things are changing fast. The village has always been as picturesque as the ski area is diverse, and over the last five years a wave of young independent creatives from across Europe have set up new restaurants, bars and boutiques that wouldn't look out of place in any major city in the world. This is quite simply a resort on the move.

The Morzine ski experience is limitless and should not be underestimated. In part because it forms part of the Portes du Soleil, spanning two countries and 12 different interconnected ski resorts, which is a great deal to ski on any one week ski holiday. But also because each skiing district has its own secret offerings, whether it be quiet slopes during peak weeks for relaxed family skiing or hidden locations that offer powder runs days after the rest of the resort has been tracked.

It is easy to forget in the midst of a ski holiday that there are other equally exciting things to experience. In reality, such is the plethora of non-ski activities, they warrant an action-packed week's holiday of their own. Morzine village offers a wealth of such experiences that happen well away from the slopes. From snowshoeing to hidden restaurants away from the crowds to parapenting with or without skis, there is so much to do here...

If you already know Morzine in the winter then it will be yours to rediscover in the summer and your love affair may even fall for the warmer season as summer opens up, not just the mountain, but the entire region. The natural beauty is astounding, as are the gifts the mountain gives you in the form of waves of colourful flowers to marvel at, cool freshwater lakes to swim in and weather to warm your soul.

When you're not out exploring the vast playground that is the Portes du Soleil we know that being back home at Chalet Sapphire certainly won't disappoint.



# The Ski Area

The unique selling point of the Portes du Soleil is the on-snow experience. Pistes of every orientation from high altitude powder bowls to beautiful winding tree-lined runs into the picture postcard villages. Not to mention the limitless off-piste. There's something for every ability from those learning for the very first time, through to the seasoned skier looking for the ultimate challenge. No two days are the same here, in fact, no two weeks are!

## THE DISTRICTS:

- Morzine-Pleney
- Morzine-Les Gets
- Nyon
- Super Morzine
- Avoriaz
- The Swiss Resorts & the Portes du Soleil
- The Stash for freestyle









