

# Chalet Twenty26

Morzine | Sleeps 12



Chalet Twenty26

# CONTENTS

---



## The Story

Twenty26 isn't just a little bit special. It's really, really, special

6

## Virtual Tour

All the features of a luxury boutique hotel, with the intimacy of a private residence

11

## Fact Sheet

Twenty26 at a glance

16

## Floor Plans

Four floors of total luxury

19

## Your Stay

The experience

29

## Bamford Spa

Your private wellness suite

32

## The Resort

Welcome to Morzine

34

“The Boutique Chalet Company raises the  
bar for Morzine chalets...”

The Telegraph  
March 2016

# THE STORY

---

# Twenty26 isn't just a little bit special. It's really, really, special.

Not only is it a world class luxury ski chalet; a trusted favourite of The Telegraph newspaper, and occasional location for Snow & Rock photoshoots. It is also the birthplace of The Boutique Chalet Company.

The Boutique ethos, the Boutique vision, and all the elements that set The Boutique Chalet Company apart started here. As did the belief that luxury ski holidays didn't just require any old luxury chalet with a series of generic boxes ticked—the chalet itself had to be a destination in its own right. Every inch of space, every room, every floor, every fixture and fitting needed to be designed solely for the holiday experience. Twenty26 is where this vision first took physical form.

When Sarah and Chris Hamblin, founders of The Boutique Chalet Company, bought Twenty26 it was an old, dilapidated farmhouse. With a lick of paint, a few fancy bathrooms, and a thoughtlessly placed hot tub, Twenty26 could easily have ticked many of the 'luxury' ski holiday boxes. But Chris and Sarah had other ideas. An extensive renovation project followed that spanned four years, two phases and received critical acclaim in the British press, not just architecturally, but also for raising the bar for luxury

ski experiences on every level, in every way. With the birth of Twenty26 came the the birth of The Boutique Chalet Company and all that is has now become.

Chris and I set up The Boutique Chalet Company in 2011, the year we bought Twenty26. We were already passionate about Morzine—it is the most incredible area to live and work and offers fantastic skiing for every age and ability. But in many ways it was undiscovered by the luxury ski market and certainly we could not find the kind of luxury experiences we enjoyed in other resorts and other locations. Both in terms of the properties available and the service delivered, luxurious ski holidays were absent from our beloved town. We decided to change that. And we started with Twenty26.

Twenty26 was a dated 70s chalet, converted from an old farmhouse that had a suffered a severe fire and was resplendent with orange cladding throughout,



terracotta tiles and a lack of light. The estate agent told us it would never be 'chaleureux'—literally warm, but she also meant it would forever be unwelcoming. We disagreed. We knew as soon as we stepped into the property that whilst the interiors and the small windows were a problem, the physical spaces were huge, the views from the large balcony were expansive and the potential to create a very special property was certainly there. The location of Twenty26—in the stunning Vallee de la Manche—was also very special indeed. Just out of the main town, yet moments from a ski lift, with hiking and biking trails on its doorstep—it felt like a hidden, unexplored valley.

So, we ploughed on with the purchase, and our plans for a complete transformation. Back in 2012 our initial preoccupation for the space was to create something that matched the likes of Verbier and Courchevel. We needed to at least match the bar before raising it!

We started by developing the top three floors of the property, creating a large, open plan living and dining area, inserting large glazed sliding doors across the whole length, giving access to the balcony and bringing those impressive views to the fore. Upstairs, we tore down all internal walls and redesigned the layout to give four spacious en suite bedrooms, retaining the wooden beams and adding roof windows to bring in light and yet more of those views.

By the time we opened for our first clients in Dec 2012 we felt we had reached our initial goal. The critics felt the same way.



But, like an eternally unfinished painting, there was always more we wanted to do! Over the next three years we started the next wave of renovations and our approach became two pronged. Architecturally we dug deep. Literally. We added an entire lower floor, converting the vaulted cellars to become the impressive Bamford Spa suite complete with hammam, treatment room, therapy shower and even a mini Bamford Boutique where you could buy Bamford products to take home. The spa area leads out onto our swimming deck with heated pool with counter current swim jet, sunken hot tub and barrel sauna. There is no better place for a swim, looking straight up the valley to the snow capped mountains on the Swiss border. The grounds of Twenty26 are extensive and lead down to a mountain river so we created lots of secluded seating areas and a fire pit for starlit apres drinks.

Prong two was the floor above where we created a private bar—The Four Bottle Bar—a place where

guests could go out, without leaving the comfort of their luxury home. We then updated and extended the private cinema, then added a further bedroom suite, one with its own private deck, freestanding bath and breathtaking mountain views.

Now, so very far from its starting point, Twenty26 offers guests four entire floors of luxury. It resembles a luxury boutique hotel, but operates as a private luxury residence. Which explains why the praise just keeps coming...



“Twenty26 can be likened to a carefully packed Christmas stocking, giving the receiver ever **more exciting surprises**, the further down they go.”

The Telegraph  
November 2017

## VIRTUAL TOUR

---

Twenty26 is set in an idyllic location, between the centre of town and the beautiful nature reserves of the Vallee de la Manche. The chalet's grounds stretch out over an acre of land and enjoy fantastic views of the Morzine ski slopes and the Dents Blanches mountain range. Set over 4 floors, spanning more than 335m<sup>2</sup>, the chalet comfortably sleeps 12 guests across 6 en suite bedrooms with a main living area over 50m<sup>2</sup> with full height glazing and a wrap-around balcony. With its own Bamford Spa, swimming pool, private bar, cinema and wine vault, Twenty26 boasts all the features of a luxury boutique hotel, with the intimacy of a private residence.

# Fire Pit Nights

Set in its own grounds, with uninterrupted views of the mountains, Twenty26 is the perfect place for evening après. Snuggle under blankets around your fire pit, regaling stories of your day on the piste; enjoy your own playlists on the in-chalet Sonos system. Now is the time to really indulge in that famous wine list, a veritable world tour of the finest hand picked wines. In the distance you will see the peaks of the Valley de la Manche (have you conquered that off-piste yet?) and the sun setting behind the slopes of the Pleney.



# Bamford Spa

Bamford and Boutique are the perfect collaboration, a harmonious partnership built on shared principles and goals. Nowhere is this more apparent than Twenty26. The in-chalet Bamford Spa is indulgent, with an entire floor dedicated to your well-being and relaxation. On the outdoor deck you can swim in the countercurrent heated swimming pool, enjoying the meditative pleasure of swimming lengths, perhaps relax those muscles in the sunken hot tub, or detox in the cedar barrel sauna. A covered walkway takes you inside, where you can refresh yourself under the hydrotherapy shower, washing away any hint of the day, or heat things up in the Hammam before stepping into the Bamford treatment room.

Our Bamford therapists offer a range of Bamford's organic and botanical treatments, with essential oils personalised for your own particular needs. Swedish and deep tissue massages ease your muscles and improve oxygen uptake and healing after a day on the piste. Or opt for something more relaxing and restorative, to help settle you for a healing night of sleep.





# Your Very Own Private Members Club

The Four Bottles Bar is like your very own private members club where you get to decide who to let in. Your private in-chalet bar serves fine wines, craft beers, select gins and spirits, and our very own signature cocktails. It's the perfect destination to start your evening at Twenty26, or perhaps to end your ski day. Get dressed up after your day on the piste, or your afternoon in the Bamford Spa, and schmooze your nearest and dearest over champagne, before retreating upstairs to enjoy a dining experience from your private chef. After dinner, why not come back and enjoy a small digestif? You could even take your drinks out on the deck – the fire pit awaits to keep you warm.



# Fact Sheet

SURFACE AREA	335m <sup>2</sup>
GROUNDS	Grounds of over 4000m <sup>2</sup> with off-street parking for 3 vehicles. Terraced grounds with spa, BBQ, dining and lounging areas, all with views up and down the valley and across to the Nyon and Pleney slopes
BEDROOMS	6 en suite bedrooms, 5 of these can be configured as either twin or King beds, 1 room is a fixed double and also has a private terrace
NORMAL CAPACITY	12 guests
SPA & WELLNESS	Outdoor heated pool 6m x 2.5m with counter-current swim jet 6 person hot tub Cedar barrel wood-burning sauna Steam room with hydro shower Treatment room with freestanding bathtub Changing room with shower, separate WC Relaxation area
BAR	Bar and lounge with flat screen TV and doors to the terrace with firepit and outdoor seating zone. A separate wine cellar features fine wines from around the world
CINEMA ROOM	Tiered seating with HD projection screen, surround sound and games consoles
AUDIO-VISUAL	Sonos music streaming and WiFi throughout the property
EXTRAS	Large boot room with heated boot dryers Children's toys, sledges, games and books
KITCHEN	Open kitchen
TIME TO SKIING	2 mins drive to Nyon (Morzine-Les Gets), 5 mins to Prodains (Avoriaz) and Pleney (Morzine-Les Gets)
TIME TO RESORT CENTRE	25 mins walk or 3 mins drive
NEAREST AIRPORT	Geneva
TRANSFER TIME	1hr 20mins



“Twenty26 is **big on style and comfort**,  
with a sunken hot-tub, barrel sauna and  
basement cinema.”

TimeOut, 2014

# FLOOR PLANS

---

# First Floor

## *Interior*

- Bedroom 1 – Junior Suite – King/twin beds, en-suite shower room. A spacious split level room with lounge/dressing area
- Bedroom 2 – Classic – King/twin beds, en-suite shower room. Panoramic skylight with mountain views and a small writing desk
- Bedroom 3 – Luxury – King/twin beds, en-suite shower room. South facing mountain and garden views and a dressing table
- Bedroom 4 – Luxury – King/twin beds, en-suite shower room. South facing mountain and garden views, a Barcelona lounge chair and a dressing table



# Upper Ground

## *Grounds & Exterior*

- Off-street parking for 3 vehicles

## *Interior*

- Front door leads into the Entrance hall with feature slate wall
- Separate access from parking into boot room with heated boot dryers
- Open-plan living and dining area spanning over 50m<sup>2</sup>, with feature fireplace and wrap-around balconies affording mountain views up and down the valley
- Matthew Hilton dining table to seat 12 guests and small bar area
- Open kitchen with breakfast bar and island



# Lower Ground

## *Grounds & Exterior*

- Large terrace with firepit and lounge seating, outdoor dining table and lawned area
- Steps to front entrance

## *Interior*

- Bar with flat screen TV and direct terrace access
- Cinema room with HD projection screen, surround sound and games consoles
- Bedroom 5 - Luxury - King/twin beds, en suite shower room. Garden views and Le Corbusier chair with dressing table
- Bedroom 6 - Luxury - Queen double bed, freestanding bathtub, basin and separate WC. Doors to private terrace with mountain views



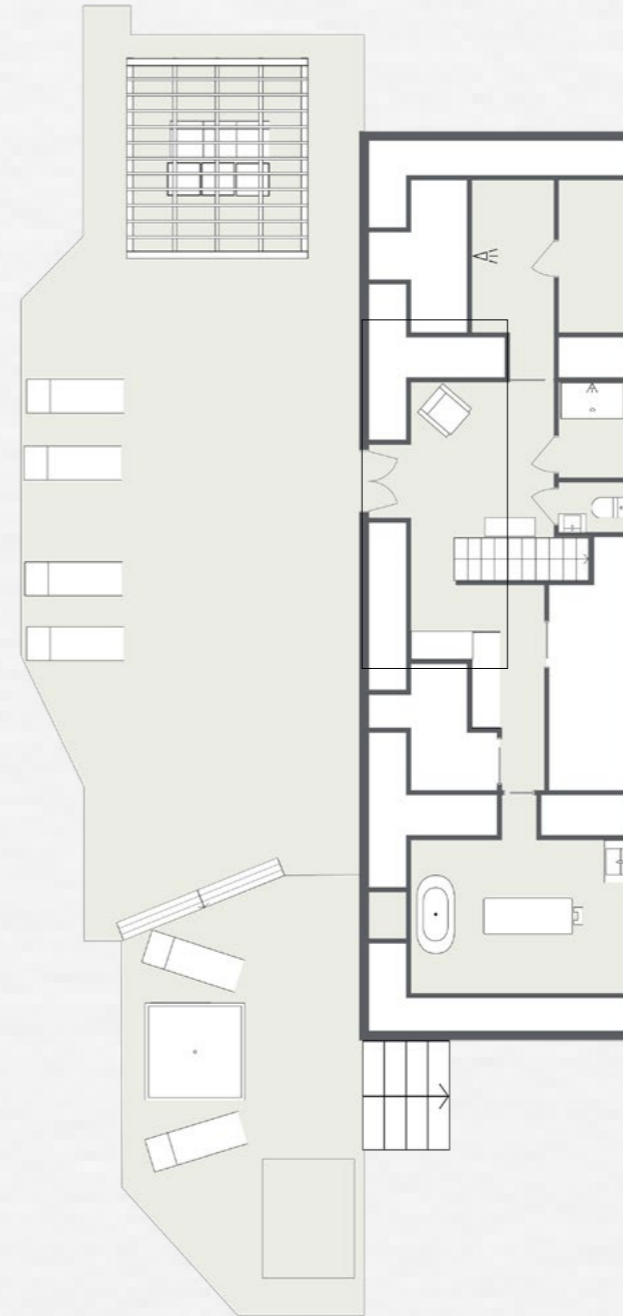
# Basement

## *Grounds & Exterior*

- Spa terrace with heated outdoor pool, 6-person sunken hot tub and barrel sauna. Sun loungers and day bed

## *Interior*

- Relaxation area with separate changing room, shower and WC
- Steam room with hydro shower
- Spa treatment room with freestanding bathtub
- Staff office, laundry room and linen store



“With accommodation that **wouldn’t look out of place in swankier resorts** such as Verbier or Courchevel... Chris and Sarah Hamblin are part of **an effort to drive Morzine upmarket** – on their part, the only way is up.”

The Independent  
Feb 2015

YOUR STAY

---



# The Experience

Chalet Twenty26 is an exceptional ski chalet, one of the finest properties in the resort. To complement the superb accommodation and facilities you can expect to be looked after by a team of highly trained professional staff who have been carefully selected to deliver our highly-regarded service package.

Champagne corks pop on your arrival, with a champagne welcome reception and an introduction to your chalet team who include a chalet manager, assistant manager, professional chef, driver and housekeeping team. Following a tour of the fabulous chalet facilities there will be plenty of time to relax and settle into your room. Sumptuous beds, Egyptian cotton linen from The White Company and indulgent organic and botanical bathroom products from Bamford are our standard.

When you emerge, rejuvenated, from your room and head for the dining table, our luxurious catered package is one of the most innovative in the industry. Guests can enjoy our signature dining concepts such as Kaiseki – our Japanese multi-course dining experience – and our critically acclaimed Breakfast Club – the finest way to start any day. Drinks are available from our Four Bottles Bar featuring fine wines, craft beers, select gins and spirits and our own cocktail menu.

Each day your driver is available from dawn to dusk to whisk you to and from the ski slopes or the village centre, so there is never a need to walk in ski boots. Our après ski chauffeur service means your comfortable shoes can even be brought to the bottom of the slopes for you!

Chalet Twenty26 is available on a fully-catered or luxury self-catered basis, for exclusive use of the whole property.



A woman with dark hair pulled back is lying on her stomach on a massage table. Her eyes are closed, and she has a serene expression. A massage therapist's hands are visible, gently massaging her back. The background is softly blurred, showing a white towel and a bright, airy environment.

# bamford

Step inside the wellness suite at Twenty26 and you will discover your very own private Bamford Spa. Our partnership with Bamford is one born out of shared values and beliefs. It's a collaboration that we are very proud of.

Bamford is about the simple pleasure of quality. Since 2006, this philosophy has created the purest body care and spa range using only organic and botanical ingredients. Bamford are committed to making truly natural products using the best artisans from around the world. Bamford is authentic luxury—serene, timeless and pure.

Bamford's organic and botanical facials and body massage treatments are individually crafted and deliver a truly relaxing experience in order to unwind after a day in the mountains.

# Welcome To Morzine



Morzine. The heart of the Portes du Soleil. A beautiful village where skiing has been part of winter life since the lifts first opened in 1934. Whilst traditionally it may not have been a destination for those seeking the finest the luxury ski world can offer, things are changing fast. The village has always been as picturesque as the ski area is diverse, and over the last five years a wave of young independent creatives from across Europe have set up new restaurants, bars and boutiques that wouldn't look out of place in any major city in the world. This is quite simply a resort on the move.

The Morzine ski experience is limitless and should not be underestimated. In part because it forms part of the Portes du Soleil, spanning two countries and 12 different interconnected ski resorts, which is a great deal to ski on any one week ski holiday. But also because each skiing district has its own secret offerings, whether it be quiet slopes during peak weeks for relaxed family skiing or hidden locations that offer powder runs days after the rest of the resort has been tracked.

It is easy to forget in the midst of a ski holiday that there are other equally exciting things to experience. In reality, such is the plethora of non-ski activities, they warrant an action-packed week's holiday of their own. Morzine village offers a wealth of such experiences that happen well away from the slopes. From snowshoeing to hidden restaurants away from the crowds to parapenting with or without skis, there is so much to do here...

If you already know Morzine in the winter then it will be yours to rediscover in the summer and your love affair may even fall for the warmer season as summer opens up, not just the mountain, but the entire region. The natural beauty is astounding, as are the gifts the mountain gives you in the form of waves of colourful flowers to marvel at, cool freshwater lakes to swim in and weather to warm your soul.

When you're not out exploring the vast playground that is the Portes du Soleil we know that being back home at Twenty26 certainly won't disappoint.

# The Ski Area

The unique selling point of the Portes du Soleil is the on-snow experience. Pistes of every orientation from high altitude powder bowls to beautiful winding tree-lined runs into the picture postcard villages. Not to mention the limitless off-piste. There's something for every ability from those learning for the very first time, through to the seasoned skier looking for the ultimate challenge. No two days are the same here, in fact, no two weeks are!

## THE DISTRICTS:

- Morzine-Pleney
- Morzine-Les Gets
- Nyon
- Super Morzine
- Avoriaz
- The Swiss Resorts & The Portes du Soleil
- The Stash for freestyle





